

Solid Edge Standard Parts

Reducing design costs through standardization

Benefits

- Maintain company standards
- Quickly locate standard parts for use in new designs
- Automate common processes for complete digital mockups
- Create assembly designs faster
- Reduce design and purchasing costs

Features

- Integrated standard parts wizard
- Support for user-defined parts
- Optional machinery library available
- Optional piping library available

Summary

Solid Edge® Standard Parts software is a powerful parts management system that allows designers to define, store, select and position commonly used parts – like fasteners, bearings, structural steel members, pipes and fittings – quickly and efficiently, enabling rapid and precise completion of 3D assemblies. With Solid Edge Standard Parts, companies establish and share their own standards, so designers can concentrate on creative design and not on redundant modeling tasks.

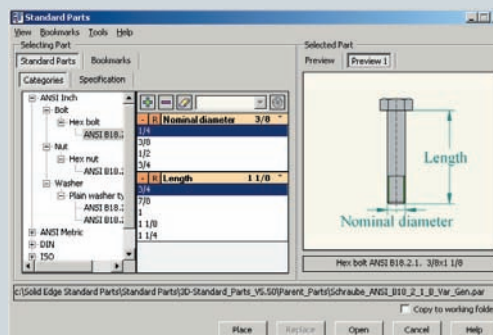
Promotes standardization

Standardized components are utilized in almost every new assembly design and therefore have a direct impact on the time-to-market, cost and quality objectives of an organization. Incorporating company-defined standards for fasteners, structural steel members, pipe fittings and other common components helps to optimize inventory and improve manufacturing workflow, while maximizing the benefits of 3D virtual prototyping. Solid Edge Standard Parts makes component libraries easily accessible, so users can quickly find the right part and effortlessly place them in Solid Edge assemblies, all within company standards.

Integrated parts wizard

The standard parts wizard is delivered with every copy of Solid Edge, and includes a baseline complement of components. Designers use the wizard to populate the library with required components that meet approved company standards, either all at once or while designing. Once defined, all components can be quickly located and placed using the same wizard,

further speeding up the creation of assembly designs and helping to meet organizational cost and quality objectives. Companies that want to have an extensive parts collection immediately can purchase one or more optional libraries that are available from Solid Edge.



VELOCITY SERIES

Solid Edge Standard Parts

How it works

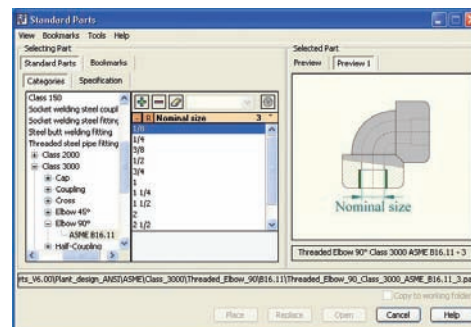
The wizard presents all available parts using an easy-to-navigate classification system that includes both a 3D preview and 2D graphic for each part. Section views, corresponding to international standards, clearly show which parameters – such as bolt length and nominal diameter – can be selected. The database also uses an intelligent filtering system to show only relevant size combinations. For example, a specific pipe diameter will display only the available fittings for that diameter. And, not only is it easy to find the correct part, but frequently used parts can be marked as favorites and directly accessed for future placement.

The standard parts wizard is fully integrated with other Solid Edge capabilities for creating 3D digital mockups. Structural steel profiles are used in conjunction with Solid Edge's powerful functionality for automated frame design, while Solid Edge XpresRoute creates predefined paths that,

once established, are populated with the proper pipes and fittings from the library. For even greater productivity, Solid Edge's exclusive capture fit technology is automatically built into each standard part. Parts contain enough intelligence to understand how they should be placed in the assembly, and the user is simply prompted to choose a corresponding part for the mated component.

Solid Edge Machinery and Piping Libraries

In addition to the baseline of components delivered with Solid Edge, additional libraries are available as optional add-on packages. The Solid Edge Machinery Library contains thousands of components, such as fasteners, bearings and pins, that support a growing range of international standards (ANSI, DIN, ISO, AFBMA, AISC, UNI, JIS, GB and GOST). The Solid Edge Piping Library contains an extensive selection of standard fittings, including elbows, bends, returns, Ys, tees and reducers, as well as a large collection of



essential components such as flanges, unions and seals. Fittings are available in a variety of relevant end treatments, such as threaded, welded, flanged and slip-on. Each of these libraries helps to ensure that all purchased and standard components conform to engineering and purchasing requirements; in addition, these libraries are continually growing. Be sure to check <http://www.solidedge.com/prodinfo/standardparts> for the latest updates.

Contact
Siemens PLM Software
Americas 800 807 2200
Europe 44 (0) 1202 243455
Asia-Pacific 852 2230 3308

www.siemens.com/velocity

© 2010 Siemens Product Lifecycle Management Software Inc. All rights reserved. Siemens and the Siemens logo are registered trademarks of Siemens AG. D-Cubed, Femap, Geolus, GO PLM, I-deas, Insight, Jack, JT, NX, Parasolid, Solid Edge, Teamcenter, Tecnomatix and Velocity Series are trademarks or registered trademarks of Siemens Product Lifecycle Management Software Inc. or its subsidiaries in the United States and in other countries. All other logos, trademarks, registered trademarks or service marks used herein are the property of their respective holders.
X4 3126 9/10 C

Il vostro rivenditore è:

TECH-VALUE
a verigroup company

CCSTEAM
Engine of Your Business

Visita il sito: www.ccsteam.it