



**SIEMENS**  
*Ingenuity for life*

# Teamcenter integration for Inventor

integration provides access to a full range of DI capabilities to further optimize your design-through-manufacturing processes.

## Streamline product development

Teamcenter integration for Inventor enables design information created in Inventor to be captured, controlled and shared by your organization in a single, highly secure DI environment with version management and access controls to ensure that the right people get the right information at the right time.

Providing a single source of product and process data, the capabilities go beyond workgroup CAD data management. The integration is optimized for scalability across a wide area network, enabling geographically distributed design centers to connect to a single database and volume server.

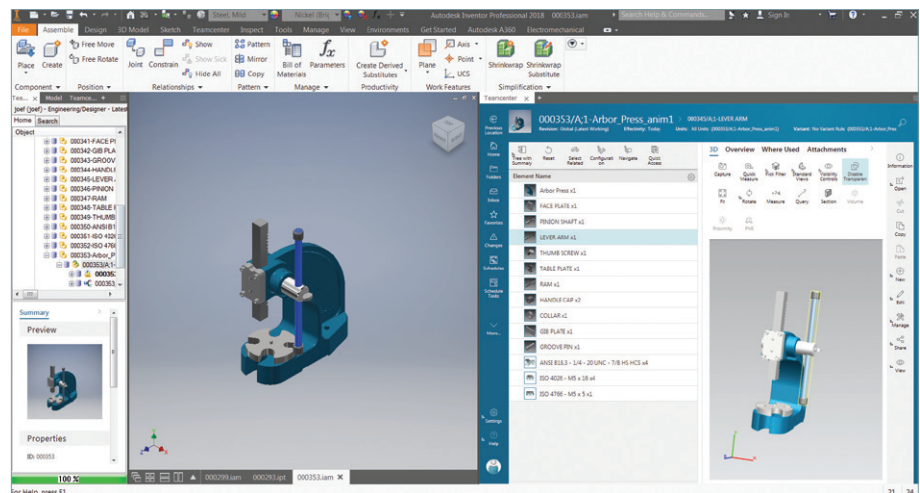
## Manage, share and re-use Inventor data to improve collaboration and overall business performance

### Benefits

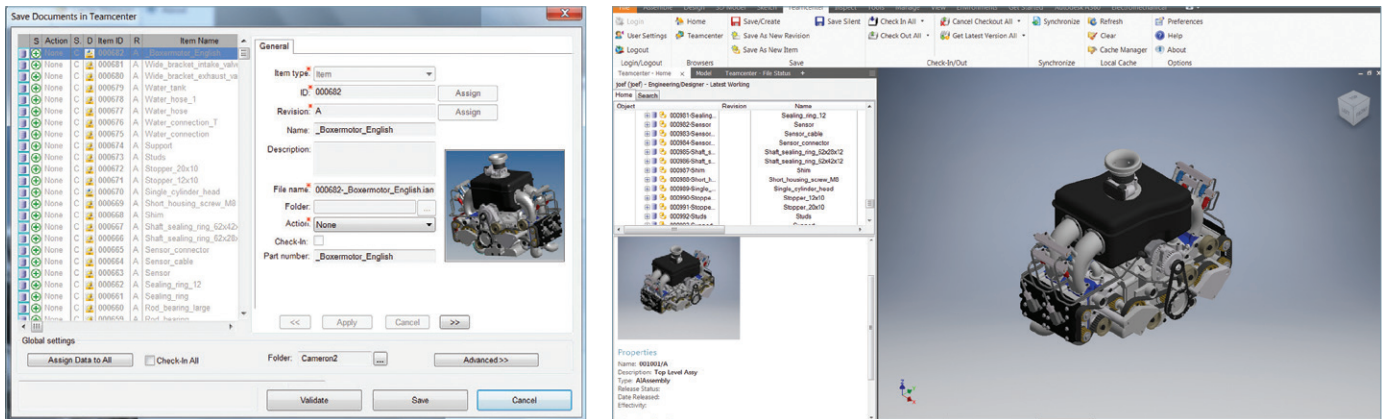
- Ability to integrate Inventor files with all of your technical data to provide a single source of product information that supports your complete design-through-manufacturing process
- Less time spent finding correct revisions of Inventor data
- Faster product change and approval processes resulting in decreased time-to-market
- Consistent work processes followed across all data formats, resulting in less errors and rework
- Improved collaboration within your organization and with customers and suppliers
- Teamcenter home browser available directly inside of Inventor to facilitate ease of use
- Fully integrated with Teamcenter Active Workspace

### Summary

Teamcenter® software's integration for Inventor enables you to reduce your product development cycle times and costs by enhancing your Inventor environment through integration with Teamcenter, the industry-leading digital industries (DI) solution. Providing a single source of product data for your design and manufacturing teams, the



# Teamcenter integration for Inventor



## Features

- Access Teamcenter and Teamcenter Rapid Start capabilities directly from within Inventor
- Active Workspace provides intuitive access to a full range of digital industries (DI) functionality
- Create and edit Inventor parts, drawings, presentations and assemblies under Teamcenter control
- Supports all Inventor data types
- Create and manage new product revisions and versions
- Bulk load entire folders of Inventor parts automatically into Teamcenter to facilitate easy deployment
- Automatically generate and save lightweight JT visualization files for Inventor parts

## Extend the value of Inventor with Teamcenter Rapid Start and Active Workspace

For new Teamcenter customers who want to get up and running quickly, you can choose the Teamcenter Rapid Start deployment option for Teamcenter, which delivers a preconfigured product data management (PDM) environment that is focused on managing everyday tasks and processes for product development. Teamcenter Rapid Start's preconfigured industry best-practice workflows including design release and engineering change ensure that processes are completed consistently and efficiently.

Active Workspace is a simple and intuitive user interface for Teamcenter that enables Inventor designers to work efficiently and effectively in a collaborative environment. The PDM environment can be extended to include non-CAD users through Active Workspace's browser-based user interface or integration with Microsoft Outlook.

## Find, share and re-use Inventor Data

With the Teamcenter integration for Inventor, design teams can quickly search and access Inventor parts, assemblies and drawings to eliminate time wasted trying to find and share design information. The integration also

enables your organization to eliminate unnecessary change orders by ensuring everyone is working from the latest design information.

Teamcenter integration for Inventor is a designer-centric solution that leverages existing Teamcenter rules and enables Inventor data to be incorporated into a multi-CAD environment.

The user interface is embedded in Inventor and includes:

- A fully featured home browser, nearly identical to the native home browser in Teamcenter
- Fully embedded Active Workspace
- Full integration with both Ribbon and classic Inventor Menu user interfaces
- Teamcenter file status browser panel for reviewing product data management (PDM) information and performing PDM operations on the documents in the current Inventor session

## Supported Inventor documents

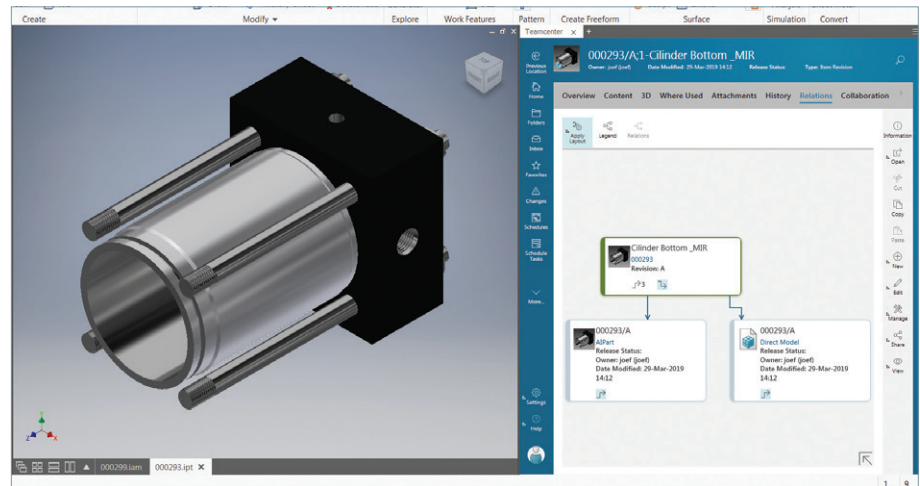
- Assemblies (.iam)
- Parts (.ipt)
- Inventor drawing format (.idw)
- Inventor DWG format (.dwg)
- AutoCAD DWG format (.dwg)
- Inventor Presentations (.ipn)

### Supported Inventor data types

- All standard part, assembly and drawing entities
- Design Accelerator output
- iParts/iAssemblies
- Content Center Libraries
- Company libraries
- Frame Generator, Harness, Pipe and Tube datatypes

### Supported integration functions

- Control versions and revisions of Inventor assemblies, parts, drawings, and presentation files
- Access Teamcenter from within Inventor using dedicated Home Browser or fully embedded Active Workspace
- Search and retrieve
- Thumbnail view
- Where used, where consumed
- Check-in/check-out status
- Save new Inventor documents to Teamcenter using Teamcenter business objects rules for ID, name, revision and other attributes
- Open Inventor assemblies using Inventor "level of detail" rules
- Determine check-in/check-out, and ownership of all Inventor documents in an assembly
- Clone Inventor assemblies, parts, and drawings for design re-use and experimentation
- Place and rename components in an Inventor assembly
- Automatically transfer product structure and part-drawing links directly into Teamcenter
- Create, configure and edit assemblies using the familiar Inventor interface
- Bi-directionally transfer properties between Inventor and Teamcenter



The embedded Active Workspace client eliminates wasted time by enabling intuitive browsing, searching, as well as access to your Teamcenter Inbox, documents, and workflow processes.

- Automatically generate and save lightweight visualization JT™ files for Inventor parts
- Automatically generate PDF files for Inventor parts and drawings
- Access a wealth of DI functionality using Active Workspace
- Leverage intuitive user search, workflow, change management, impact analysis, and more

### Teamcenter advantage

The Inventor integration is supported by both Teamcenter and Teamcenter Rapid Start which power innovation and productivity by connecting people and processes with knowledge.

Teamcenter is the most widely used DI system, which is backed by Siemens Digital Industries' leadership in delivery. Users of Teamcenter can easily expand the scope of their DI implementation by taking advantage of a comprehensive portfolio of applications as well as its proven scalability in terms of performance and global implementation.

Teamcenter Rapid Start is a preconfigured PDM deployment option for Teamcenter that manages design data, as well as everyday tasks and processes; providing an ideal entry point into the Teamcenter product line for small and medium-sized businesses with a growth path to DI.

Siemens Digital Industries Software  
[siemens.com/plm](https://www.siemens.com/plm)

Americas +1 314 264 8499  
 Europe +44 (0) 1276 413200  
 Asia-Pacific +852 2230 3333

Restricted © Siemens 2019. Siemens, the Siemens logo and Siemens Opcenter Execution are registered trademarks of Siemens AG. D-Cubed, Femap, Fibersim, Geolus, GO PLM, I-deas, JT, NX, Parasolid, Polarion, Simcenter, Solid Edge, Syncrofit, Teamcenter and Tecnomatix are trademarks or registered trademarks of Siemens Product Lifecycle Management Software Inc. or its subsidiaries or affiliates in the United States and in other countries. All other trademarks, registered trademarks or service marks belong to their respective holders.  
 11855-C20 6/19 H